

San Mateo County

Off-leash Dog Pilot Program Data Summary:

Monitoring Period 5 (May 2022 – June 2022)

Pilot Program Data Collection

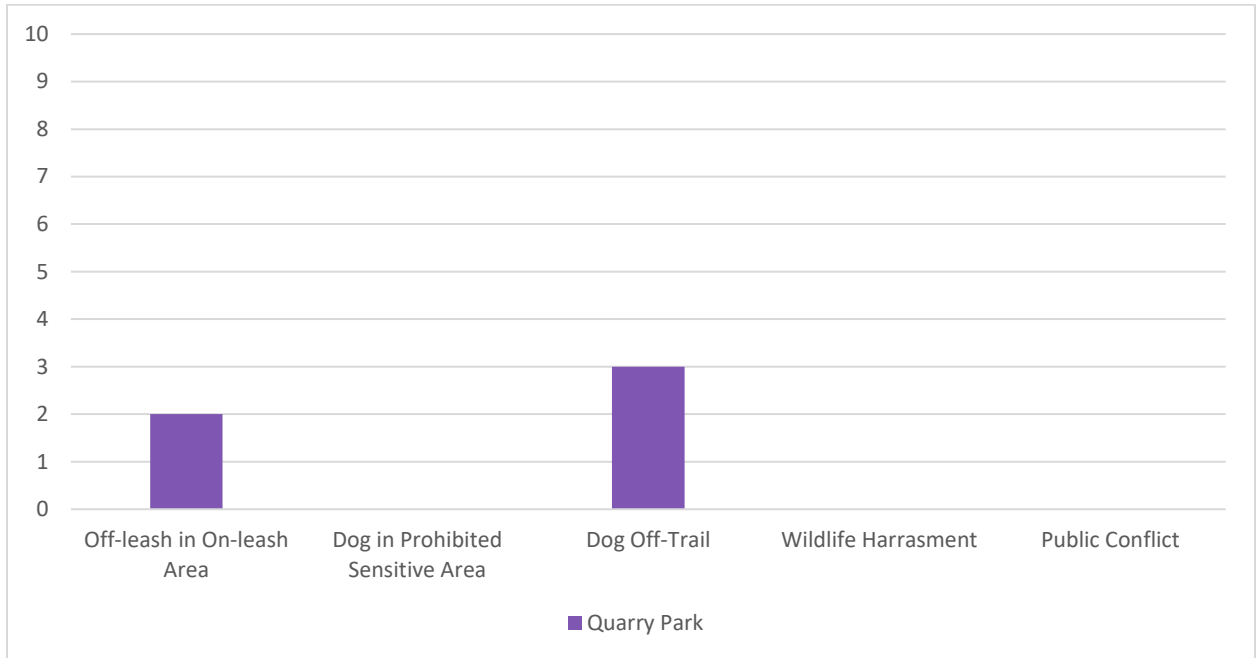
Table 1. Overall Dog Monitoring Results at Quarry Park as measured for May 2022 and June 2022.

	Standards	Quarry Park
Presence of dog waste ¹	No more than 20 occurrences in one month	26 instances per month
Harassment of wildlife	Dogs observed chasing or harassing wildlife two times over a 60-day period	0 instances
Dog entry to sensitive areas	No dogs observed entering Parks defined and signed sensitive areas	0 instances
Dogs traveling off-trail	Dogs observed traveling at 10 feet or more off trail	3 instances
Leash compliance for on-leash trails ²	70% of parties with dogs will have their dogs on a leash when using an on-leash trail	75% leash compliance
Interactions with dogs and visitors	Any dog is observed exhibiting unwelcome behavior(s) to other dogs or visitors 10 times per month	0 instances

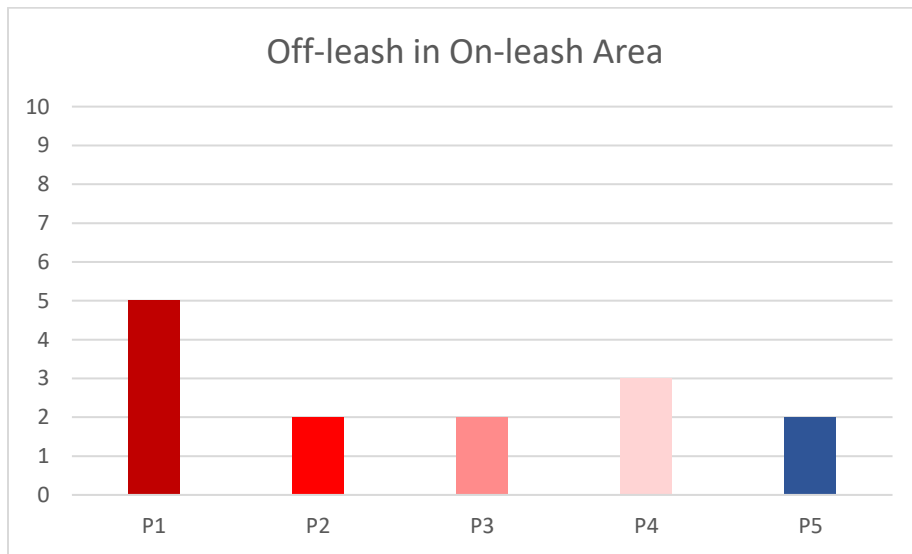
¹ “Per month” data for this row was calculated by averaging the total observations for each month indicated in table 2.

² Leash compliance data was calculated as the average percentage of “on-leash dogs in on-leash trails” out of “all dogs in on-leash trails” for the monitoring period.

Graph 1. Dog Monitoring Results (excluding “Presence of Dog Waste”) at Quarry Park as measured for May 2022 and June 2022.



Graphs 2a-d. Change in Dog Monitoring Results (excluding “Presence of Dog Waste”) at Quarry Park throughout all monitoring periods³.



³ “Wildlife harassment” is also excluded, due to there being no observed instances for any of the monitoring periods.

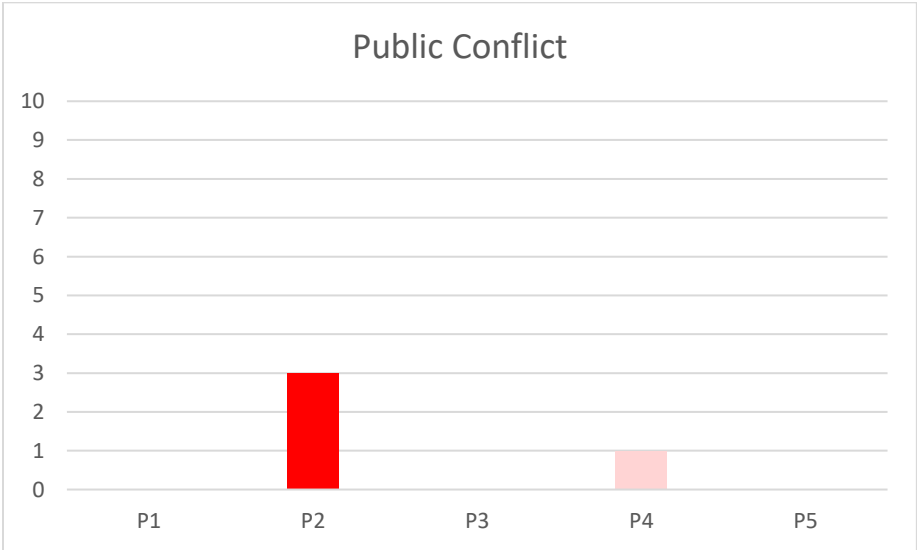
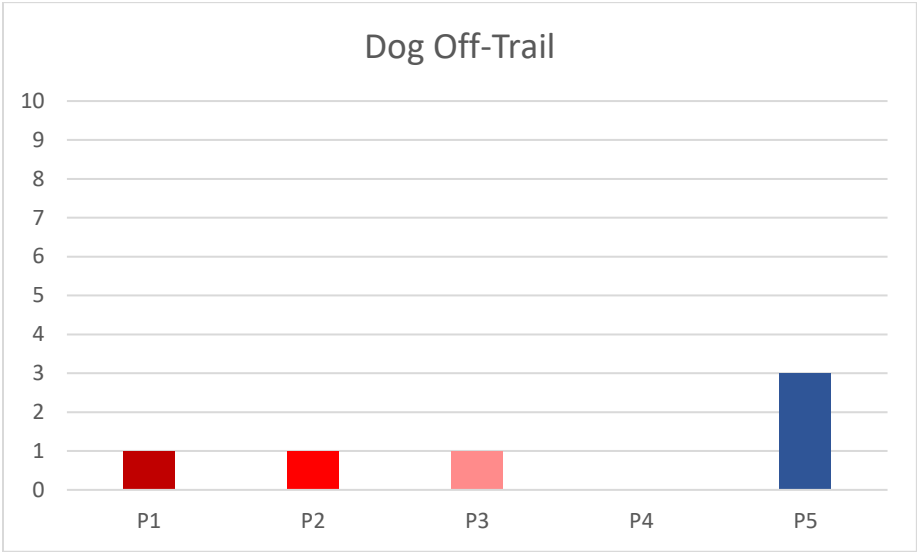
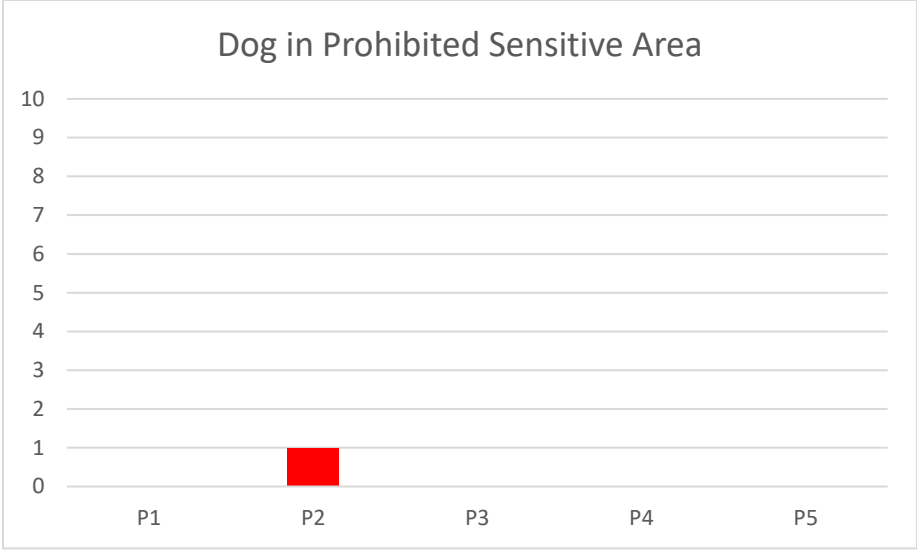


Table 2. Monthly Dog Monitoring Results for “Presence of Dog Waste” and “Interactions with Dogs and Visitors” at Quarry Park as measured for May 2022 and June 2022.

		May	June	Total
Quarry Park	Presence of Dog Waste	23 instances	29 instances	52 instances
	Interactions with Dogs and Visitors	0 instances	0 instances	0 instances

Graph 3. Dog Waste Comparison at Quarry Park as measured for May 2022 and June 2022.

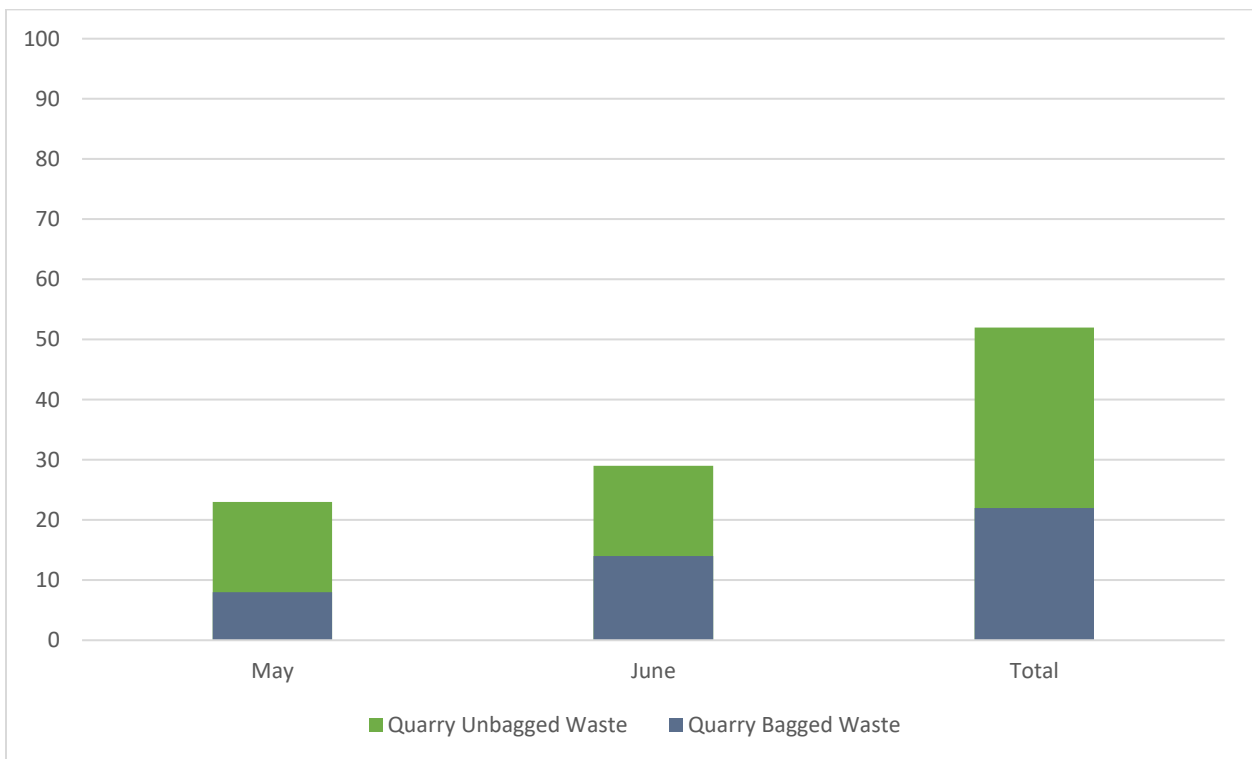


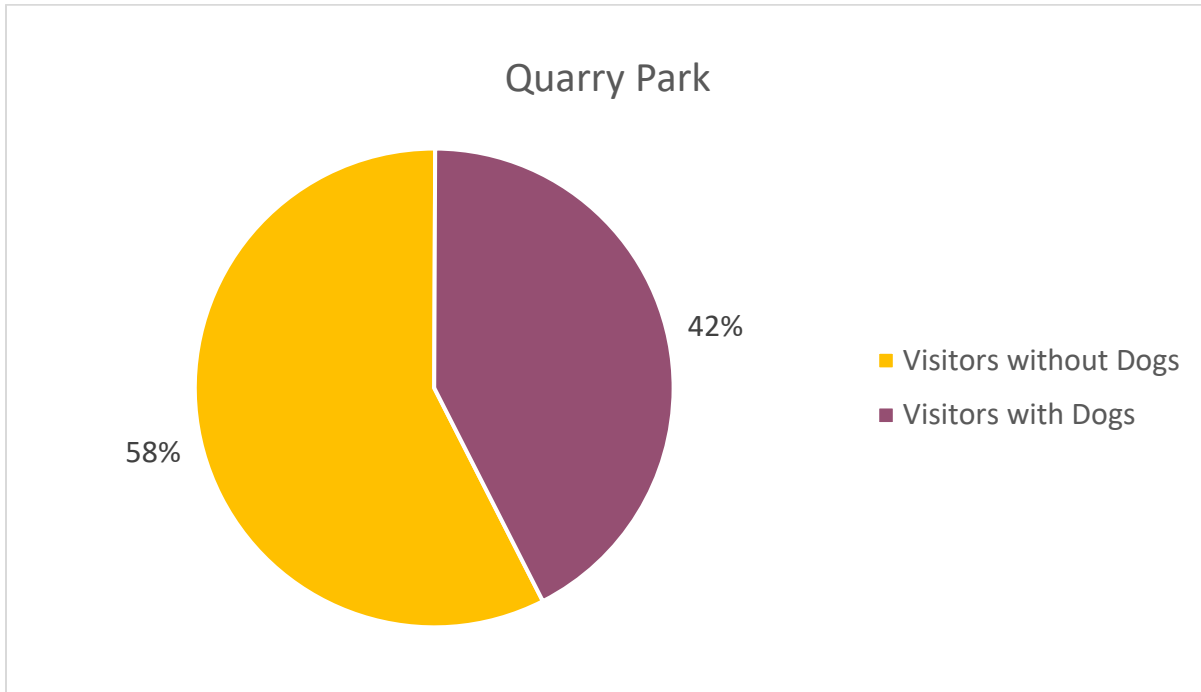
Table 2. Visitor Demographics at Quarry Park as measured for May 2022 and June 2022.

	Quarry Park	
Total visitors overall	509	
	Total	% of visitors overall
Visitors without dogs	293	57.6%
Visitors with dogs	216	42.4%

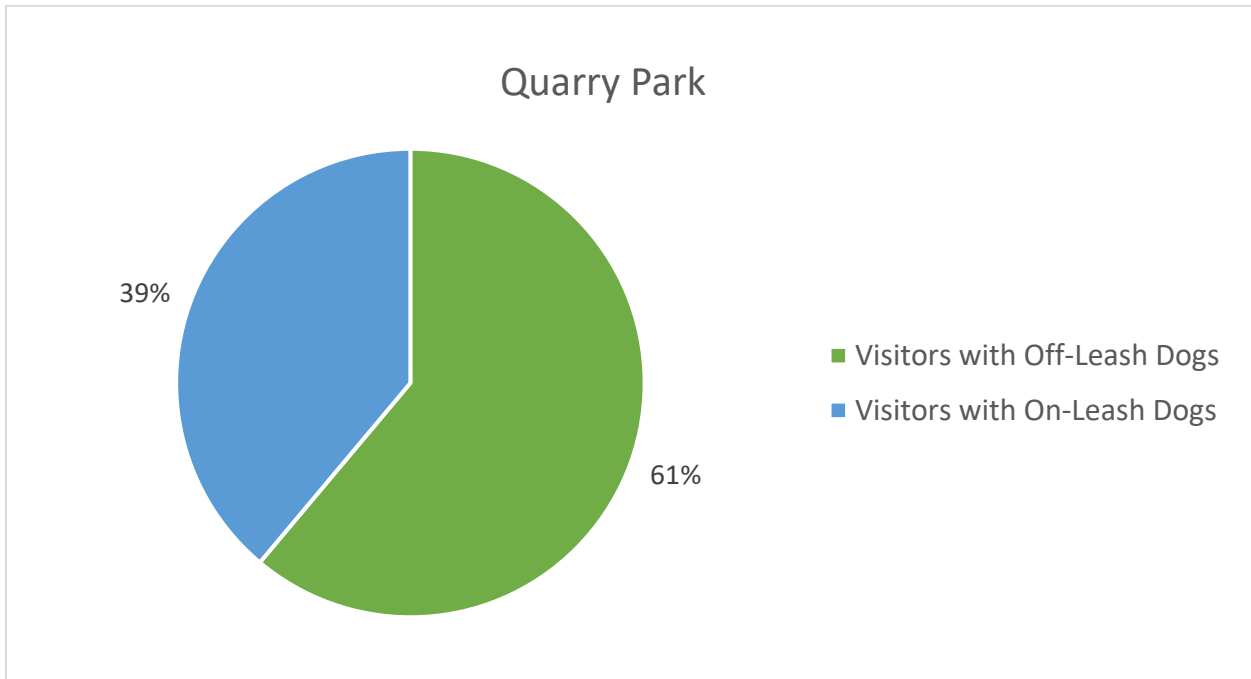
Table 3. Demographics of Visitors with Dogs at Quarry Park as measured for May 2022 and June 2022.

	Quarry Park	
Total visitors with dogs	216	
	Total	% of visitors with dogs
Visitors with off-leash dogs	132	61.1%
Visitors with on-leash dogs	84	38.9%

Graph 4. Percentage of Visitors with or without Dogs out of Total Visitors at Quarry Park as measured for May 2022 and June 2022.

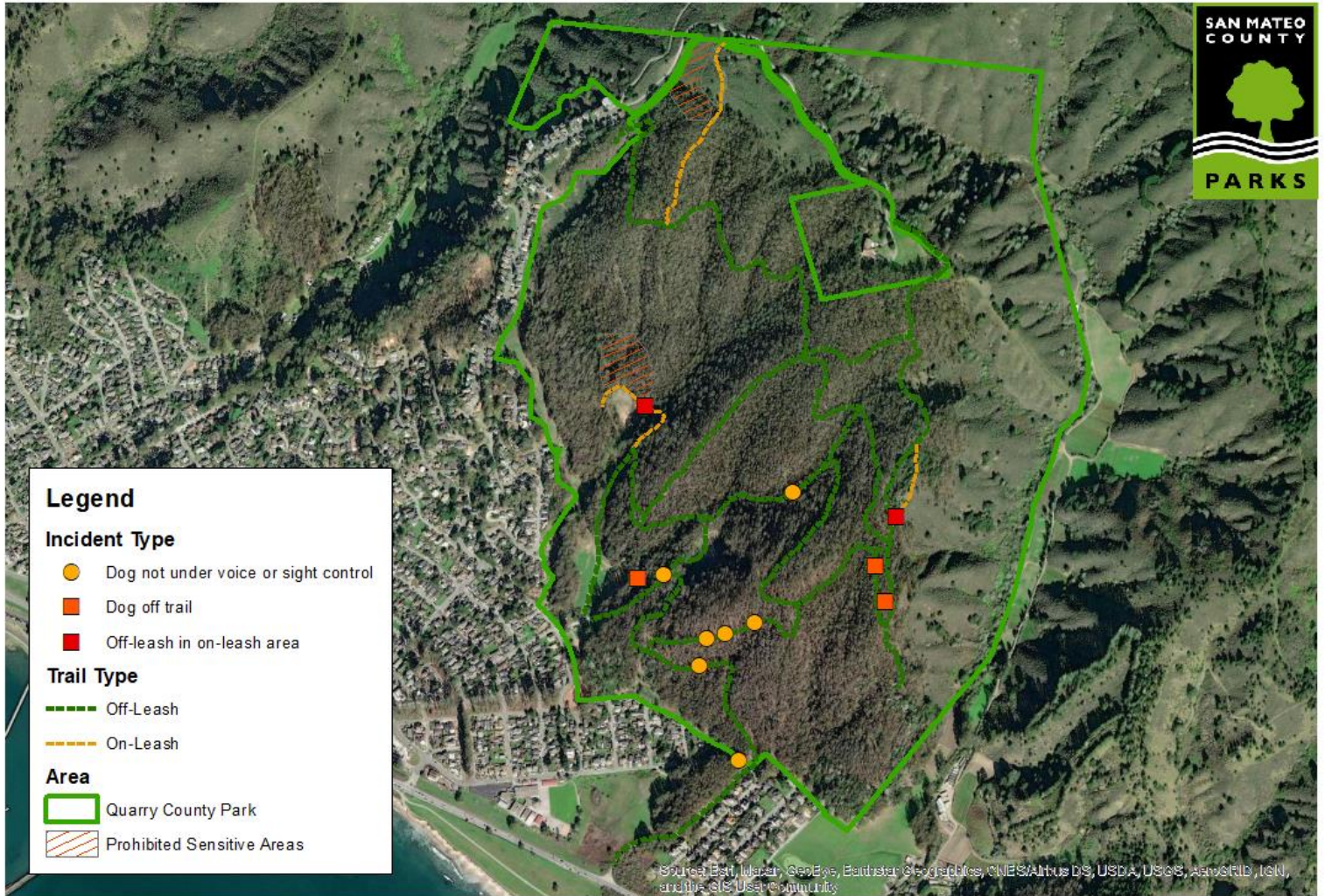


Graph 5. Percentage of Visitors with Off-Leash or On-Leash Dogs out of Visitors with Dogs at Quarry Park as measured for May 2022 and June 2022.



I. Maps

Map 1. Dog Monitoring Criteria (excluding “Presence of Dog Waste”) at Quarry Park as measured for May 2022 and June 2022.

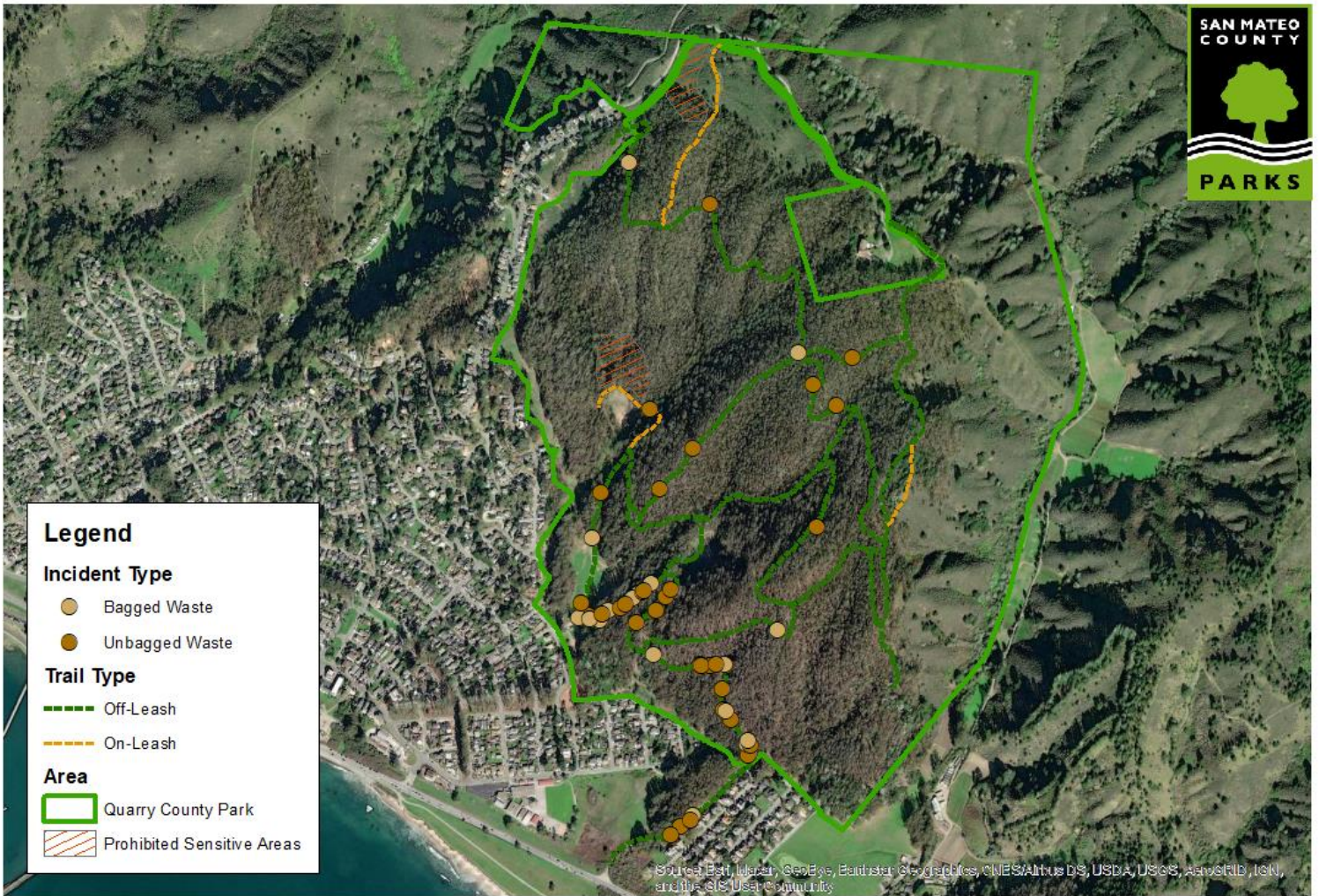


Dog Recreation Incidents: Quarry Park

0 0.25 0.5 Kilometers



Map 2. Dog Waste Observations at Quarry Park as measured for May 2022 and June 2022.



Dog Recreation Incidents: Quarry Park

0 0.25 0.5 Kilometers



II. Summary of Results

Overall, dog walkers only exceeded criteria standards for presence of dog waste, exceeding the 20 instances per month standard with an observed average measure of 26 instances per month (23 instances in May and 29 instances in June). Comparison to Monitoring Period 4 reveals that leash compliance increased from 71.4% to 75%. Instances of dogs traveling off-trail increased from no instances to three instances. Harassment of wildlife and entry into prohibited sensitive areas both remained at zero, and public conflicts decreased from one instance to no instances.

In terms of visitor demographics, Quarry Park had 509 total visitors for Monitoring Period 5, with 42.4% of its total visitors bringing dogs and 57.6% visiting without dogs. Sixty-one percent of visitors with dogs at Quarry Park let their dogs off-leash, while 38.9% kept them on-leash. Compared to Monitoring Period 4, there was a decrease in overall visitors from 601 to 509. There was a decrease in both the number of visitors without dogs and the number of visitors with dogs, with the former going from 317 to 293 and the latter from 284 to 216. There was also a decrease in both visitors with off-leash dogs and visitors with on-leash dogs, with the ratio between the two shifting from 67.4% off-leash and 32.6% on-leash in Monitoring Period 4 to 61.1% off-leash and 38.9% on-leash in Monitoring Period 5

III. Courses of Action

In accordance with the Off-leash Dog Recreation Pilot Program's IS/MND, the Department will post the following sign in Quarry Park:

“Off-leash dog recreation is being piloted at Quarry Park. The Department is monitoring 8 criteria, including presence of dog waste. The amount of dog waste being left on trails exceeds the pilot standard.

For success of this pilot program, dog waste must be picked up, bagged, and disposed of in a trash can.

See more about the Quarry Park Dog Recreation Program at (URL and insert QR Code).”