

Moss Beach

STATE ROUTE 1 CONGESTION & SAFETY
IMPROVEMENTS PROJECT UPDATE

PUBLIC MEETING AND OPEN HOUSE
SEPTEMBER 19, 2023



SCHEDULE:

6:00 – 6:30

6:30 – 7:00

7:00 – 7:40

7:40 – 8:00

Open House

Presentation

Open House

Wrap-Up

Agenda

- Location & Background
- Needs & Goals
- Project Overview
- Conceptual Alternatives
- Preliminary Traffic Analysis
- Preliminary Environmental Analysis
- Schedule & Next Steps
- Questions & Open House

Project Team



Project Sponsor



Funding and Implementing Agency

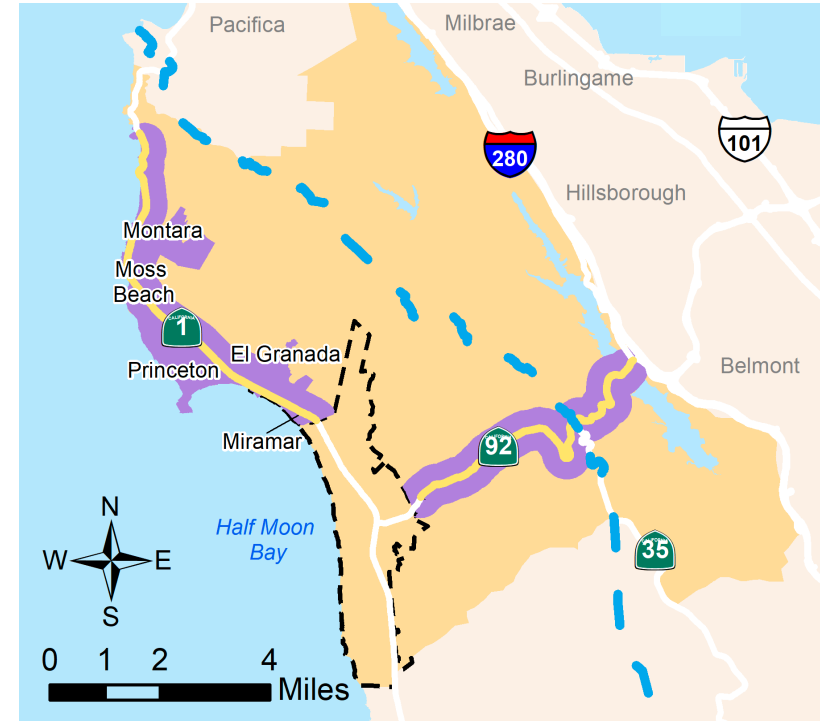


State Highway System Owner/Operator

Background

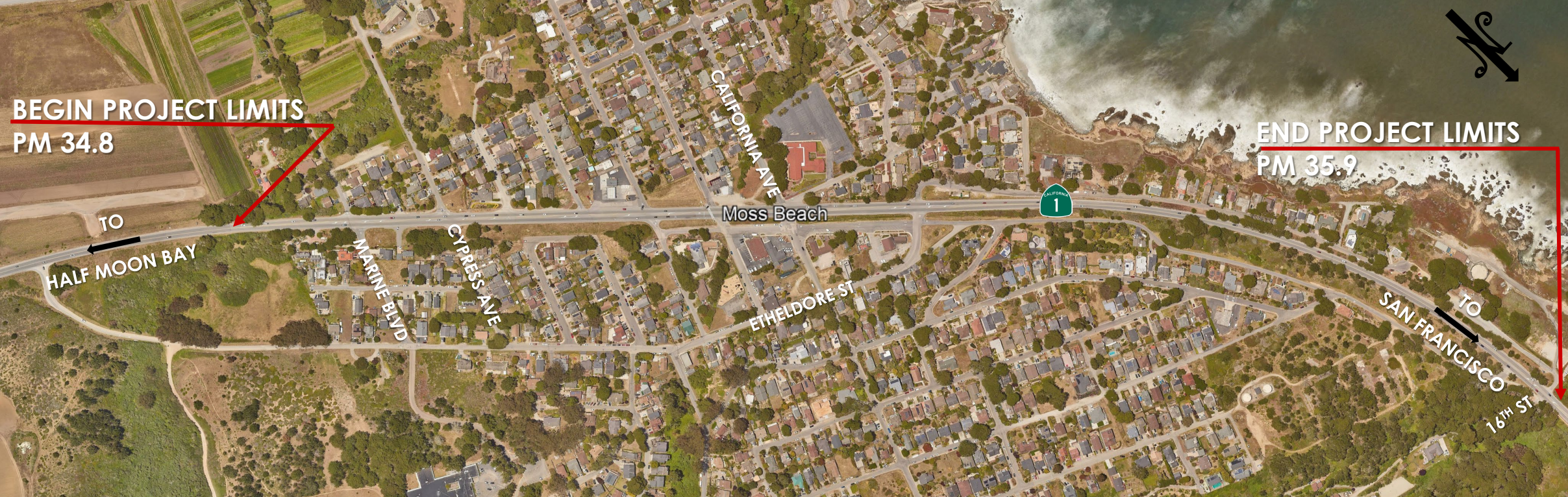
For more than a decade, the County of San Mateo and partners have engaged in transportation planning along State Route 1:

- 2009** Highway 1 Safety and Mobility Improvement Study (Phase 1)
- 2012** Highway 1 Safety and Mobility Improvement Study (Phase 2)
- 2012** Local Coastal Program
- 2015** Highway 1 Congestion and Safety Improvement Project Preliminary Planning Study
- 2022** Connect the Coastside: The San Mateo County Midcoast Comprehensive Transportation Management Plan
- 2023** Conceptual Designs and Caltrans Coordination for SR 1 in Moss Beach



Early implementation project to come out of the **Connect the Coastside**

Project Vicinity Map



Identified Issues

- High Speed Traffic on SR 1
- Few pedestrian crosswalks
- No bicycle facilities

Leads to:

- Difficulty for pedestrians and bicyclists to cross SR 1
- Difficulty accessing local businesses
- Difficulty to enter SR 1 from local streets
- Unpredictable travel times

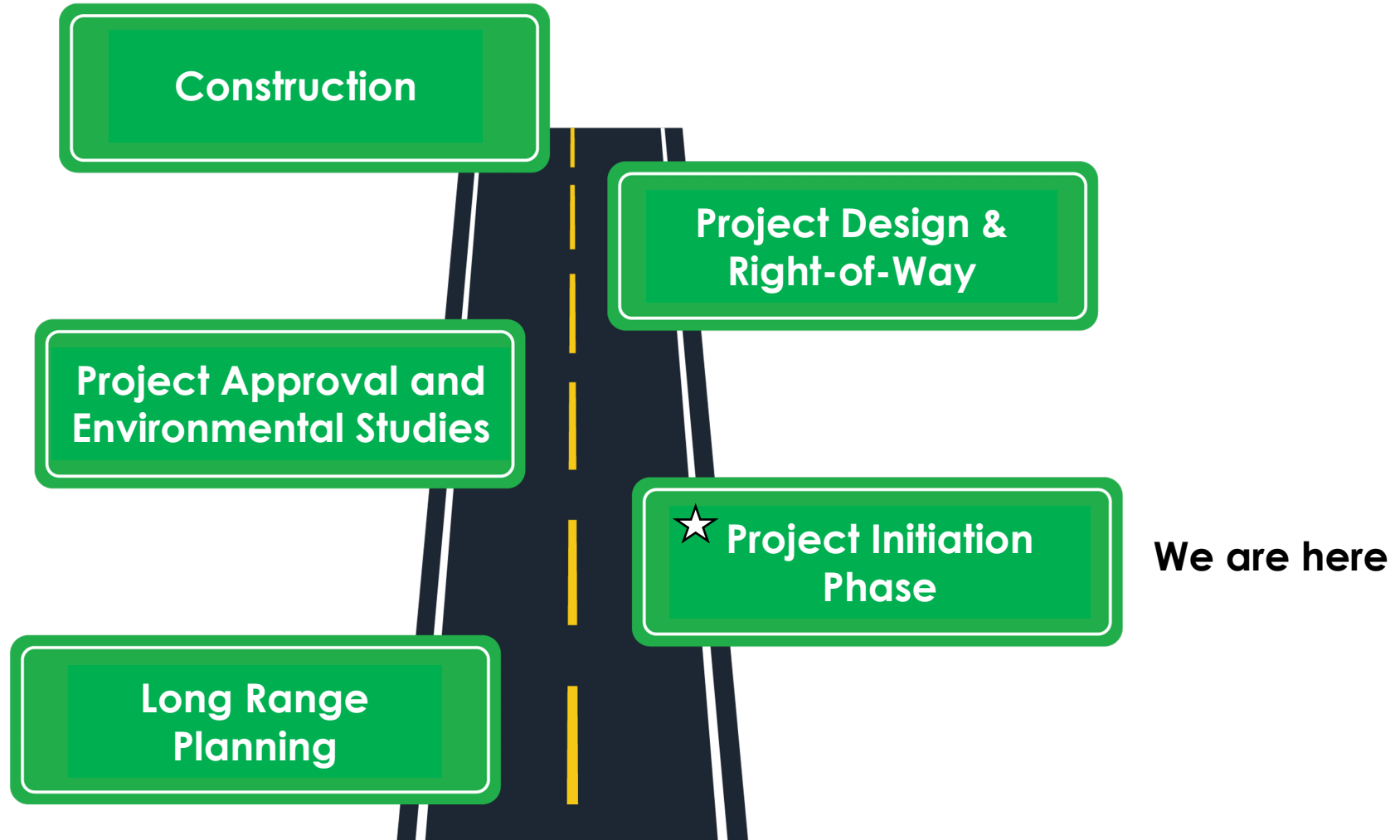


Project Goals

- Improve pedestrian and bicycle facilities
- Encourage environmentally friendly transportation options
- Improve multimodal connections to coastal resources
- Improve the operations and safety for all users at key intersections



Phases of a Project



What happens during Project Initiation?

Outcome

- Develop project alternatives
- Conduct Preliminary Environmental Assessment
- Conduct Preliminary Traffic Assessment
- Identify Preliminary Right-of-Way/Utilities Impacts
- Develop initial cost estimates
- **Initial coordination with Stakeholders:**
 - Community
 - Midcoast Community Council
 - Permitting Agencies
 - Caltrans
 - CHP
 - Bicycle Advocacy
- Completed Project Study Report (Caltrans)
- Allows Project to move forward to the Project Approval and Environmental Document Phase

Project Overview

Improvements may include:

- Pedestrian walkways
- High-visibility crosswalks
- Multimodal trail
- Bike lanes
- Bus stop enhancements
- Roundabouts and/or traffic signals
- Dedicated turn lanes

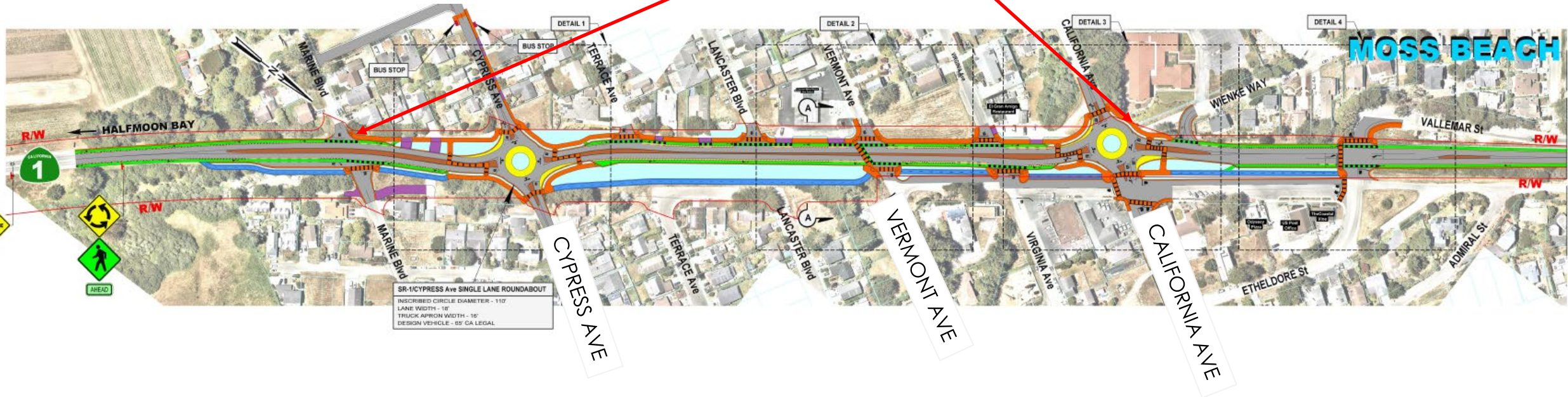


Project Alternatives

- **No project**
 - Do nothing
- **Project Build Alternative 1**
 - Signal at 16th St, Roundabouts at California Ave and Cypress Ave
- **Project Build Alternative 2**
 - Signals at 16th St, California Ave, and Cypress Ave
- **Two options** for addressing 16th St / Carlos St intersections with HWY 1
- **Build Alternative 1 has options** for raised center median or center turn lane
- **Both** alternatives include **pedestrian, bicycle, and transit** improvements

Pedestrian & Bicycle Features – All Alternatives

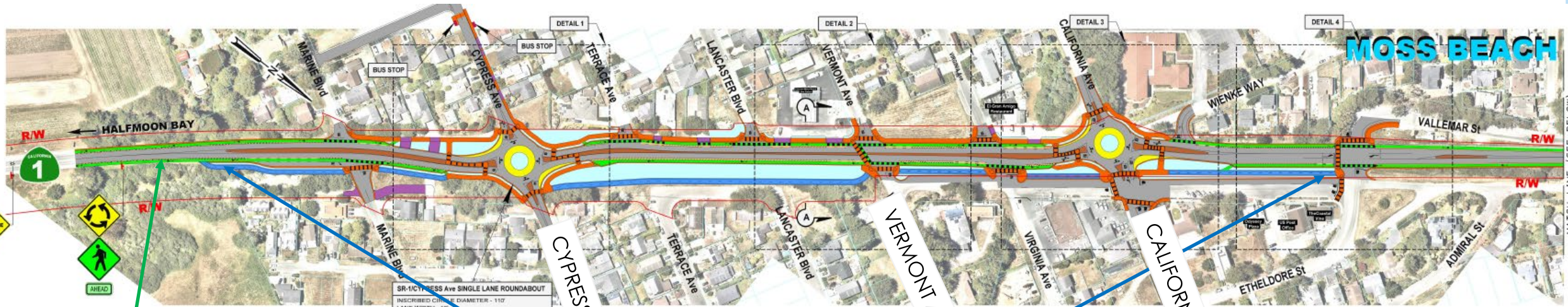
Walkways



Walkway

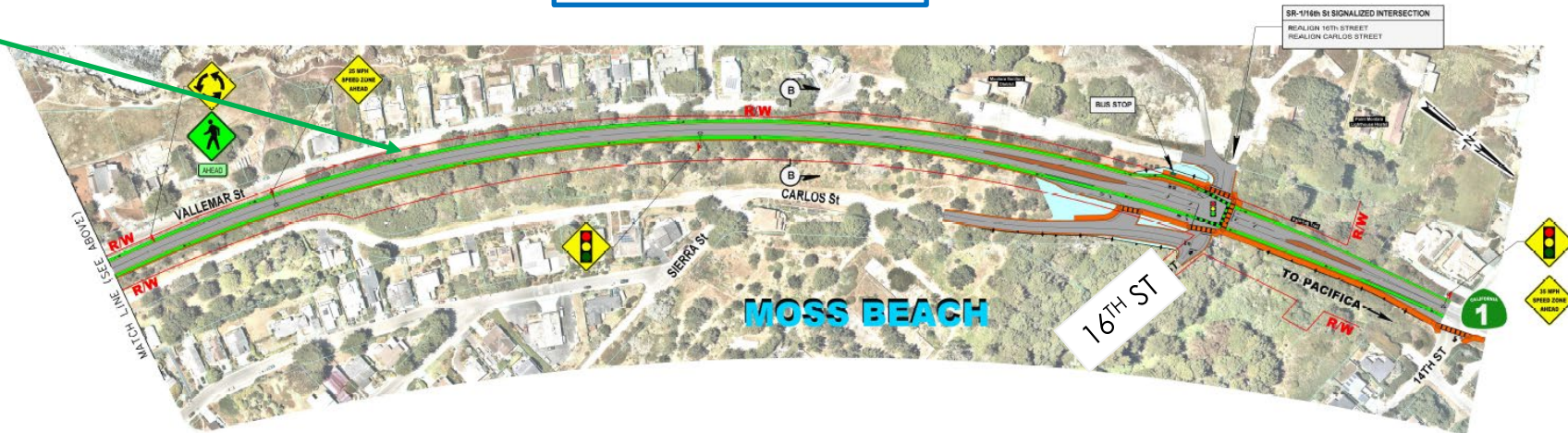


Pedestrian & Bicycle Features – All Alternatives

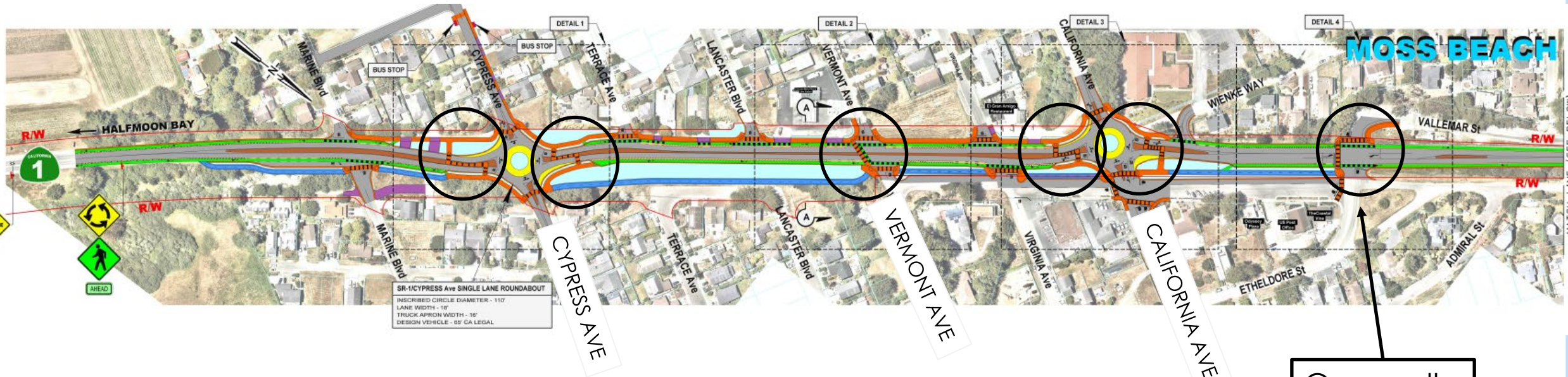


Bike Lane

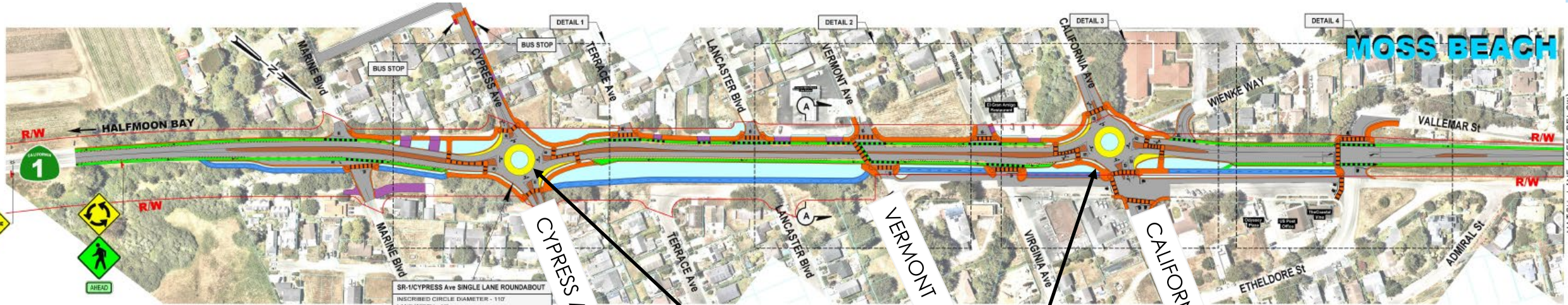
Multimodal Trail



Pedestrian & Bicycle Features – All Alternatives



Project Alternative 1, Options A & B



CYPRESS AVE

VERMONT AVE

CALIFORNIA AVE

Roundabouts

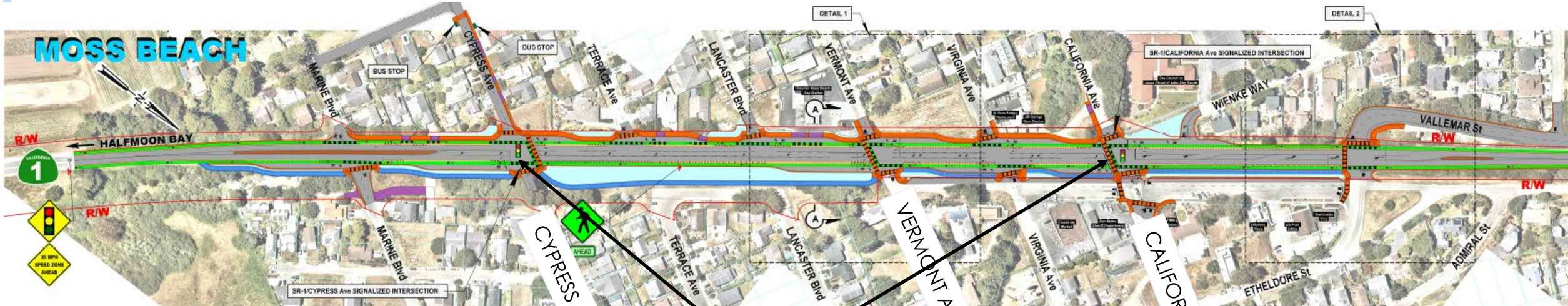
Traffic Signal



MOSS BEACH

16TH ST

Project Alternative 2

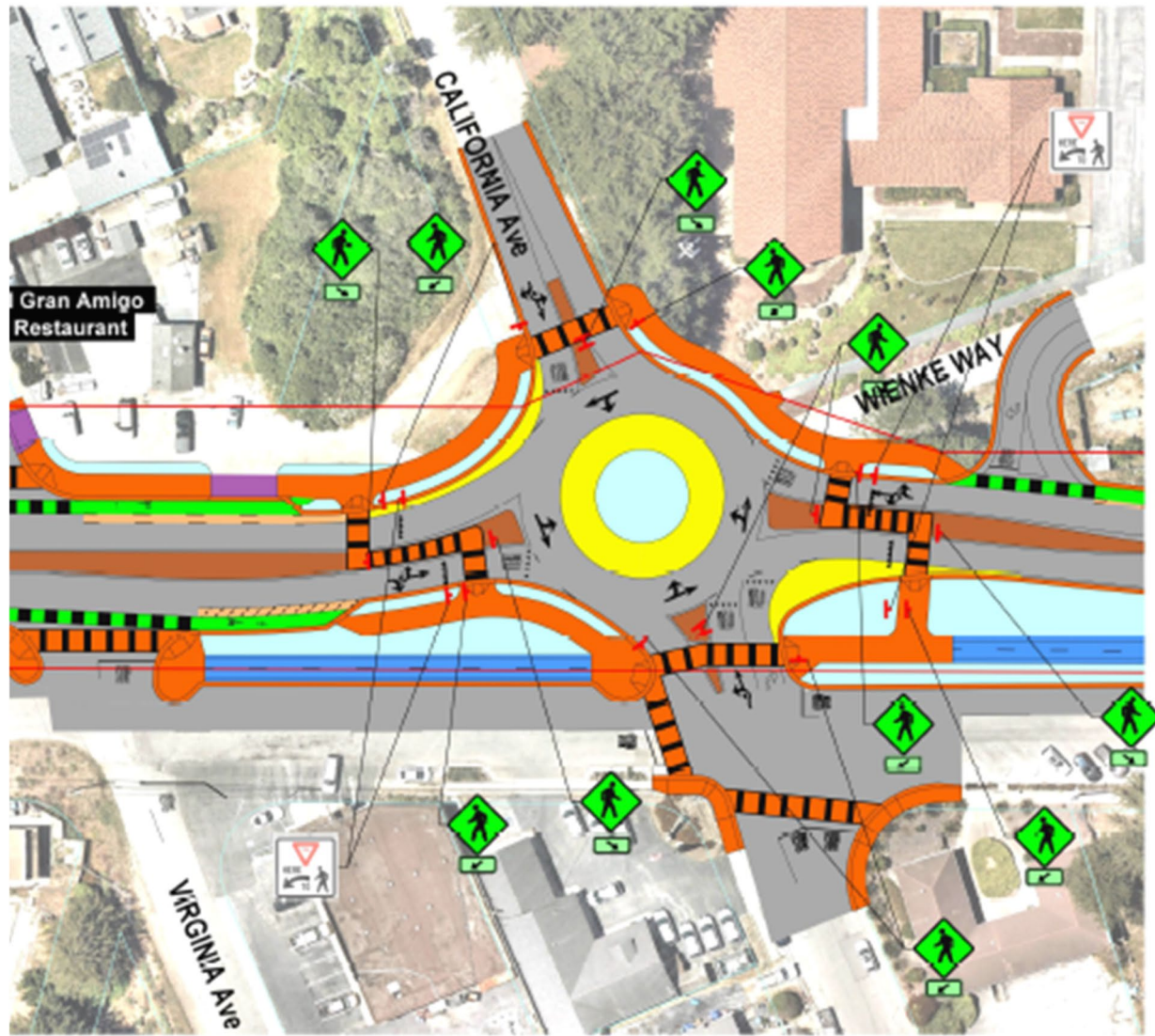


Traffic Signals

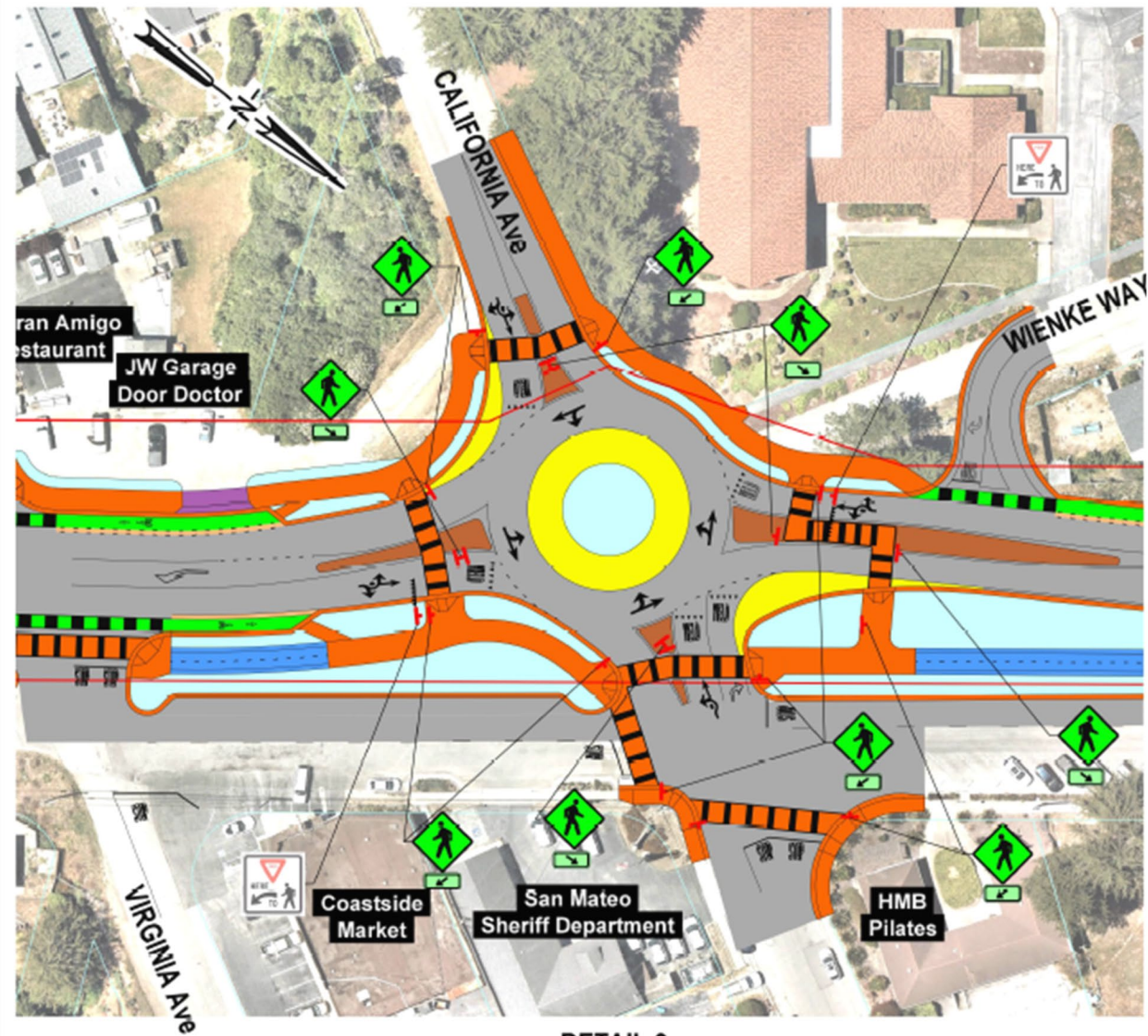


Alt 1, Option A (Raised Median)

Alt 1, Option B (No Raised Median)

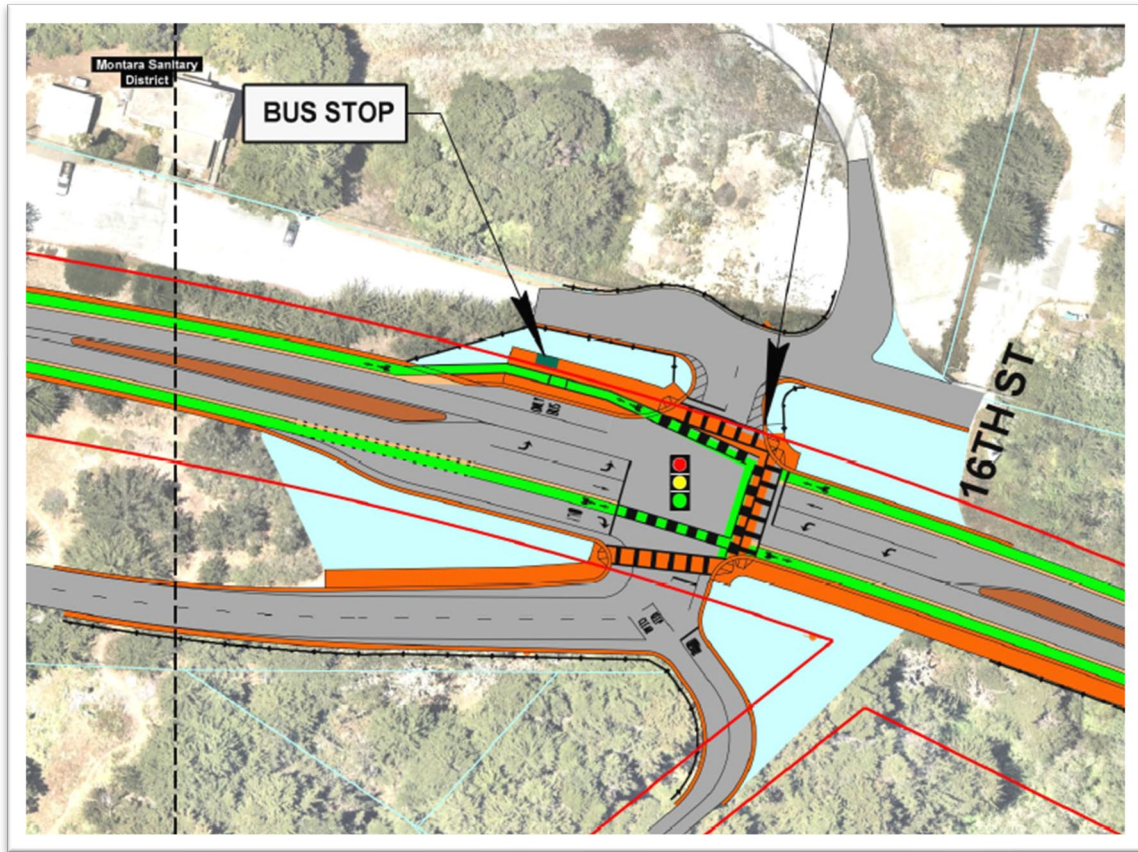


DETAIL 3
SR-1/CALIFORNIA Ave SINGLE LANE ROUNDABOUT

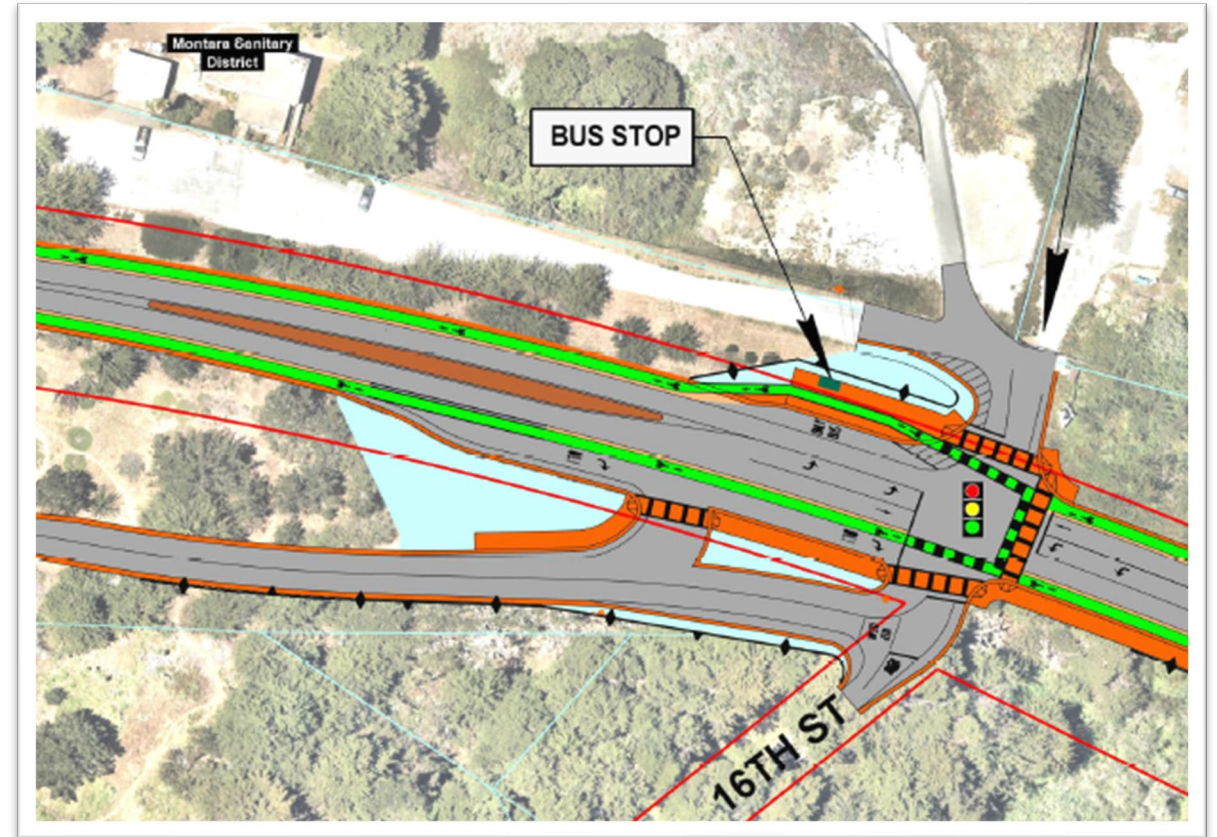


DETAIL 3
SR-1/CALIFORNIA Ave SINGLE LANE ROUNDABOUT

Project Alternative 1 at 16th Street



Project Alternative 2 at 16th Street



Preliminary Traffic Review - Existing

Key Observations



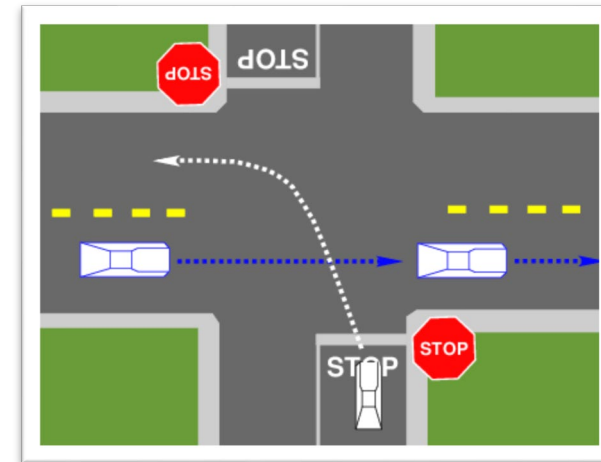
Average **17,000 vehicles** a day drive on HWY 1 in Moss Beach (highest on weekends)



It only takes an average of **1.5 minutes** to drive through Moss Beach on HWY 1 but the side-street delay can be as long as **7 minutes**



All intersections with HWY 1 are two-way stop-controlled so HWY 1 has the right-of-way (right to go first)



Example two-way stop-controlled intersection



Preliminary Traffic Review - Alternatives

- Existing vehicular wait times will get worse in the future without any new infrastructure
- Signals and roundabouts both create more gaps in flow of traffic for cars to enter/exit highway
- Signals and roundabouts have different tradeoffs
 - *Both will help calm traffic*
- Adding new pedestrian and bicycle facilities will increase safety and access to community resources and bus stops

Video Simulations

- Informational tool to help everyone understand how roundabouts and/or traffic signals could work on HWY 1
- The simulations demonstrate **weekend** midday traffic in 2050
- Each alternative would reduce wait times at the intersections by an average of **40%** compared to a No Build Alternative
- With roundabouts and/or traffic signals, it could take an extra **30 seconds** to drive through Moss Beach on HWY 1

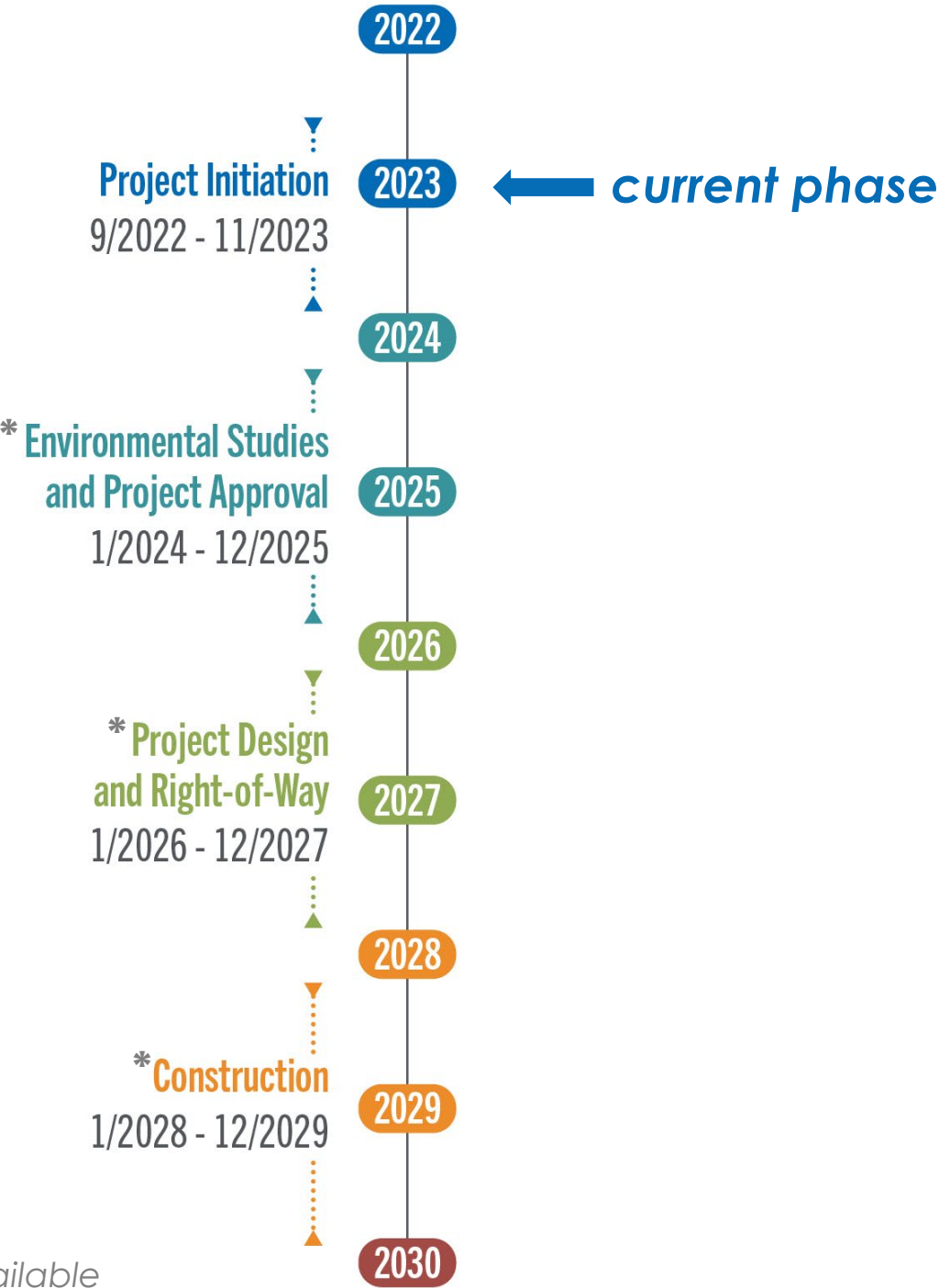


Preliminary Environmental Review

Key Findings

- Biologically sensitive area including three creeks, wetlands, and endangered species habitat
- Potential buried archaeological resources
- Project likely to require Coastal Development Permit, U.S. Army Corps of Engineers Permit, U.S. Fish & Wildlife Permit, California Department of Fish and Wildlife for Fish and Game Permit
- Anticipated Mitigated Negative Declaration/Environmental Assessment for CEQA/NEPA

Project Schedule



* Phases after Project Initiation will move forward when funding is available

Next Steps

- Caltrans, County, & SMCTA working together to finalize the **Project Initiation Document (PID)** that will move the project to next phase (*Project Approval and Environmental Studies*)
- **Your feedback will be submitted as part of this report**
- The County has submitted an application to the SMCTA for funding of the next phase
- **This project will be presented to Midcoast Community Council on October 11, 2023**

Thank you!



For questions or comments about this project, please contact:

Chanda Singh
Senior Transportation Planner
County of San Mateo
csingh@smcgov.org

Lilliana Price
Project Manager
San Mateo County Transportation Authority
pricee@samtrans.com

To learn more about this project, please visit: www.smcgov.org/planning/Moss-Beach-SR-1